



Authorised Distributors

- ▶ Wikus-Germany Bimetal Band Saw Blades
- ▶ Everising Band Saw Machines
- ▶ Everising Circular Saw Machines
- ▶ Tenryu-Japan TCT & HSS Circular Cutters
- ▶ Escon Files & Tools
- ▶ Classic Industrial V-Belts
- ▶ Solar Diamond Tools
- ▶ Magicut Hole Saws
- ▶ Hardcastle Lubricants & Coolants
- ▶ Other Cutting Tools

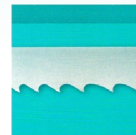
Services

- ▶ Umang Engineering Services
- ▶ Servicing of Band Saw Machines
- ▶ Servicing of Circular Saw Machines
- ▶ Spares
- ▶ Demonstration Center

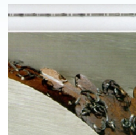


Wikus Bimetal Band Saw Blades

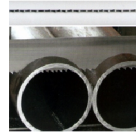
The perfect product portfolio for standard and special applications. The back of the blade is made of alloyed steel that offers excellent continuous operation properties. Proven cutting material M42 with superior wear resistance in conventional applications. Modified cutting material X3000 (exclusive to WIKUS) with high hardness and toughness appropriate for difficult to machine materials. High cutting edge stability thanks to a newly developed heat treatment technique.



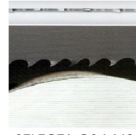
BIMETAL BLADE



MARATHON M42



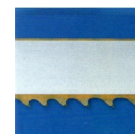
VARIO M42



SELECTA GS M42

Sales units: Coils in fixed lengths and manufacturing coils of up to 120 m, depending on the width. Welded-to-length band saw blades.
Band widths: 6 to 100 mm
Tooth shapes: S, P, K, HV, VA
Tooth pitches: 0.7 - 1.0 to 12 - 16 teeth per inch (tpi)
Types of tooth set: SD, WS, GS
Qualities: M42: 68-69 HRC, approx. 980 HV. X3000: approx. 70 HRC, approx. 1000 HV
Special designs: PW: for article groups 532, 534, 633, 636, 638, 639. PE: for article groups 526, 529, 631

Carbide Tipped Band Saw Blades



CARBIDE TIPPED BLADE



FUTURA



FUTURA PREMIUM



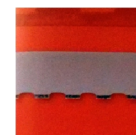
FUTURA PREMIUM VA

Available in specially ground and / or set tooth geometries. Excellent results in every application thanks to the different degrees of hardness and compositions of the carbides used. Very high cutting performance for increased machine productivity. Coated premium blades for maximum cutting performance. Long blade life and extremely high performances of our premium products by using the best possible backing material.

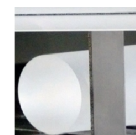
Sales units: Coils of up to a max. of 50 m. Welded-to-length band saw blades.
Band widths: 13 to 125 mm
Tooth shapes: S, K, T, TSN
Tooth pitches: Constant: 1.25 to 4 teeth per inch (tpi). Variable: 0.7 - 1.0 to 3 - 4 tpi
Types of tooth set: SD
Qualities: M42: 68-69 HRC, approx. 980 HV. X3000: approx. 70 HRC, approx. 1000 HV
Special designs: PW: Available for article groups 541, 545, 548, 645, 648

Diamond Coated Band Saw Blades

Available in specially ground and / or set tooth geometries. Excellent results in every application thanks to the different degrees of hardness and compositions of the carbides used. Very high cutting performance for increased machine productivity. Coated premium blades for maximum cutting performance. Long blade life and extremely high performances of our premium products by using the best possible backing material.



DIAMOND COATED BLADE



DIAGRIT K



DIAGRIT S



DIAGRIT U

Sales units: Welded-to-length band saw blades
Band widths: 10 to 100 mm
Diamond coating: Continuous (K), Segmented (S), Intermittent (U), with 6 to 30 mm pitch
Grain sizes: D91, D126, D181, D252, D356, D427, D601
Option: Alternative band dimensions upon request



Everising Fully Automatic Band Saws

S-250HA/S-250HB
250 . 300 x 250 mm



S-250HA/S-250HB

S-300HB
300 . 300 x 250 mm



H-260HB

H-260HB
260 . 310 x 260 mm

H-360HA
360 . 360 x 360 mm



H-700HANC

H-700HANC
700 . 800 x 700 mm

H-7065HANC
650 . 700 x 650 mm



NC-700HA

NC-700HA
700 . 800 x 700 mm

H-1100HANC
1000 . 1100 x 1000 mm

H-1100HANC

S-400HA
420 . 420 x 420 mm



S-400HA

S-460HB
460 . 460 x 460 mm

H-460HA
460 . 500 x 460 mm



H-560HA

H-560HA
560 . 615 x 560 mm

H-800HANC
800 . 800 x 800 mm



H-1070HANC

H-1070HANC
700 . 1000 x 700 mm

NC-460HB
460 . 460 x 460 mm



NC-460HB

Semi Automatic Billet Saws

H-360SA
360 . 360 x 360 mm



H-360SA

H-5550
500 . 350 x 500 mm

H-8070
700 . 800 x 700 mm



H-1010

H-1010
1000 . 1000 x 1000 mm

H-1616 V/T
1600 . 1600 x 1600 mm



H-1616 V/T

H-1816
1600 . 1800 x 1600 mm

H-2116
1600 . 2100 x 1600 mm

H-7050
500 . 700 x 500 mm



H-8276 V/T

H-7056
560 . 700 x 560 mm

H-8276 V/T
760 . 820 x 760 mm

H-1100 V/T
1000 . 1100 x 1000 mm



H-1100 V/T

H-1300
1300 . 1300 x 1300 mm

H-1613
1300 . 1600 x 1300 mm



H-2116

Circular Saws

P-75C
10-75 . 10-54 x 10-54 mm



P-75C

P-100C
15-100 . 15-80 x 15-80 mm

P-150C
70-150 . 70-105 x 70-120 mm



P-150C

P-230B
70-230 . 70-160 mm

Miter Cutting Band Saws

S-4633SA
300 . 460 x 305 mm



S-4633SA

S-6240SA
400 . 620 x 400 mm

S-82465SA
460 . 820 x 460 mm

S-82465SA
460 . 550 x 460 mm, 380 . 380 x 460 mm

HW-450/650
450 . 650 x 420 mm



HW-500/900

HW-500/900
410 . 410 x 420 mm

S-6235SA
520 . 900 x 500 mm

S-6235SA
500 . 510 x 500 mm

S-6235SA
350 . 620 x 350 mm, 350 . 420 x 350 mm, 300 . 290 x 350 mm



TCT Circular Saw For Heavy & Light-Duty Cutting

TECHNICAL SPECIFICATIONS:

Materials: Structural Steel, Tool Steel, Alloy Steel, Stainless Steel, Aluminum Alloy, Copper Alloy.
Shape of Materials: Bar Steel, Bar Stainless Steel, Solid - down pipe, Deformed Material.
Blade Dimensions: Diameter: 200-910; Kerf: 1.0-4.5; Teeth: 40-300
Tooth Geometry: Notched Breaker
Tooth Material: Carbide P30, Cermet, PVD coating TiN, AITIN, CrN
Features: Despite its thin kerf, this model boasts longevity, perpendicularity and smooth cut surface.



TCT Circular Saw For Heavy Duty Cutting



TECHNICAL SPECIFICATIONS:

Materials: Structural Steel, Tool Steel, Alloy Steel, Stainless Steel
Shape of Materials: Bar Steel, Seamless Pipe, Electrowelded Pipe, Bloom, Billet
Blade Dimensions: Diameter: 280-1800; Kerf: 2.0-12.0; Teeth: 28-280
Tooth Geometry: Trapezoidal, Notched
Tooth Material: Carbide M20, P30, PVD Coating TiN, AITIN, CrN

Cutting Parameters:

Steel Grade: Heavy; Cutting Speed(m/min) : 50~100; Feed Rate Per Tooth (fzmm) : 0.04~0.0
 Steel Grade: Medium; Cutting Speed(m/min) : 80~120; Feed Rate Per Tooth (fzmm) : 0.08~0.15
 Steel Grade: Stainless; Cutting Speed(m/min) : 50~90; Feed Rate Per Tooth (fzmm) : 0.05~0.10

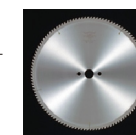
TCT Circular Saw For Tube & Pipe Cutting

TECHNICAL SPECIFICATIONS:

Materials: Steel Pipe, STKM 11A, 12A, 13A
Shape of Materials: Thin-walled Pipe, Thick-walled Pipe, Seamless Pipe
Blade Dimensions: Diameter: 250-910; Kerf: 1.7-4.0; Teeth: 60-200
Tooth Geometry: BNCR, BNCSR, BNCV, BNCSV
Tooth Material: Cermet (coating or non-coating), Carbide (coating or non-coating)
Cutting Parameters: Cutting Speed(m/min) : 100~200; Feed Rate Per Tooth (fzmm) : 0.01~0.03



HSS Circular Saw Ferrous & Non-Ferrous Metals



Work Material Categories Ferrous & Non-Ferrous Metals

Surface Treatment

	Normal	Steam	Temper	TiN	TiAIN	Multi				
Diameter	225	250	275	300	315	350	400	425	450	500
Kerf	1.5-2.0	2.0-2.5	2.0-2.5	2.0-3.0	2.0-3.0	2.0-3.5	2.0-4.0	2.0-4.0	2.0-4.5	2.0-5.0
Arbor	32	32	32,40	32,40	32,40	32,40,50	32,40,50	32,40,50	32,40,50	32,40,50
Driving	2.8-45	2.9-45	2.9-50	2.9-50	2.9-55	2.9-55	4.11-63	4.11-63	4.11-63	4.11-63
Holes		4.11-63	4.11-63	4.11-63	4.11-63	4.11-63	4.15-80	4.15-80	4.15-80	4.15-80

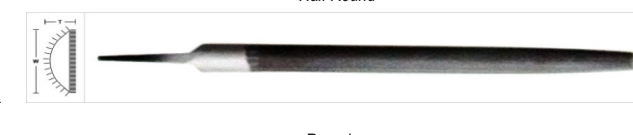


Escon Machinist Files

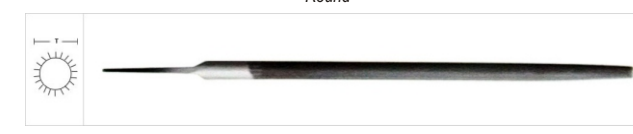
Flat



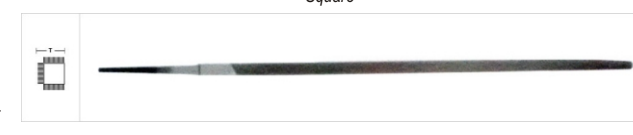
Half Round



Round



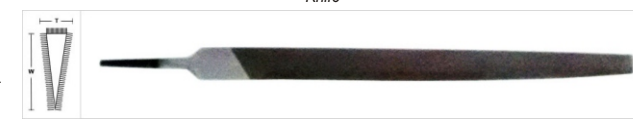
Square



Three Square



Knife



Escon Flexible Couplings



TYRE COUPLINGS



JAW COUPLINGS



STAR COUPLINGS



BUSH TYPE COUPLINGS

Classic Industrial V-Belts



CLASSIC INDUSTRIAL V-BELTS



EDGE COGGED BELTS



CONVEYOR BELTS



CONVEYOR BELTS

SERVICES

Umang Engineering Services



An associate company of Umang Marketing, Umang Engg. Services, offers Metal Cutting Facility. We have imported, Fully Automatic world class, Everising Make - Band Saw Machines and Circular Saw machine.

We offer the metal cutting facility to various customers spread over from Automobile, Aerospace, Machine Tool, Forging Industries etc.

Servicing of Band Saw & Circular Saw Machines

Umang Engineering Services offer servicing of Band Saw and Circular Saw machine to Mechanical, Electrical and Electronics, Hydraulics Industries etc.



Spares: We supply spares for all kinds of Band Saw Machine and Circular Saw Machine of any make.

Demonstration Center



Umang Engineering Services offer free demonstration of Everising Circular Saw, Band Saw Machine operation, Wikus Bi-Metal Band Saw Blade operation and Tenryu - Japan TCT & HSS Circular Cutters operation.

Authorised Distributors



umang marketing

SM-118, 1st Floor, ITI Industrial Estate, Whitefield Road, Mahadevapura Post, Bengaluru-560 048, Karnataka (India)

Phone: +91-2851 3681 / 2851 3682

Mobile: +91-98452 87066 / 98455 41288

Email: umangmrkt@gmail.com

Sales: sales@umangmarketingblr.com

Accounts: accounts@umangmarketingblr.com

Website: www.umangmarketingblr.com



Solar Diamond Tools

Umang Marketing is one of the leading authorized distributors for high end Solar Diamond Tools, which includes Diamond Files, Diamond Wheels, Electroplated Wheels, Honing Stones, PCD/CBN Inserts & Special Tools as per Customers' Drawing Diamond Paste, Single Point Natural Dressers, Standard Diamond Dresser Shank, Throw-away Diamond Dresser Shank, Shapping Tools, Cluster Dressers etc.



DIAMOND DRESSER



DIAMOND DRESSER



HONING STONE



HONING STONE

Diamond Dressers: Single Point, MCD Single Point, CVD Single Point, Grit Dresser, Cluster Dresser, Crown Dresser, Hex-Disc Dresser, Chisel Dresser, MD-20 Roller, Ball Wheel Dresser, Blade Dresser, MCD Blade Dresser, CVD Blade Dresser, Shaped CVD Blade Dresser, Diamond Guaging Point, Indenter (Natural Diamond & MCD)

Honing Stones:

- 1. Metal Bond Diamond & CBN Stone:** Standard Stone, Compact Stone, Solid Stone, Slotted Stone, Stone with Shoe, Special Stone
- 2. Metal Bond Diamond & CBN Stone:** ISO Insert, Brazed Tool, Special Tool, Full Top PCD, Solid PCBN, PCD Dresser



Electroplated Products



Electroplated Products



Diamond Lapping Products



Diamond Wheels

Single Point Diamond Dresser:

Single point "bruted diamond" dressers are made with selected "congo Rounds" mounted in a matrix. A single cutting edge is presented to the grinding wheel.

Diamonds for single point dressers are selected in accordance with quality and size. The question of using a superior, average or commercial quality, depends on the grinding finish required and the machines and working parameters.

We offer three grades namely A, B & C for all the diamond size, Availability: 0.25 Ct to 5.00 Ct

Throw-Away Diamond Dresser:

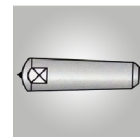
Throw-away type diamond dressers are made of small selected crystal shape or octahedral diamonds, mounted in a matrix. Only one cutting edge is presented to the grinding wheel.

Multipoint Indexable Crown:

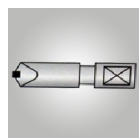
A Multipoint Diamond Dresser in which sharp natural diamonds are set in a circular crown at right angle to the operating plane. As soon as the diamonds on the indexed position are completely used up, the crown can be re-indexed on the shank for new points. Shanks for the crown are made to customer's specifications.



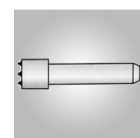
SINGLE POINT DIAMOND DRESSER



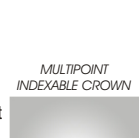
DIAMOND DRESSER



SHAPING TOOL



CLUSTER DRESSER



MULTIPOINT INDEXABLE CROWN



MULTIPOINT INDEXABLE CROWN



Magicut Hole Saws

Mini Hole Saws:

Magicut Bimetal Mini Hole Saws are toothed HSS strips welded to a tough alloy body and disc. These precision manufactured hole saws have outstanding strength, resilience and shatter resistance.



MINI HOLE SAW



MINI HOLE SAW

Salient Features & Advantages:

- * Solid back dis for smooth and precise cut
- * Single piece construction
- * Precise tool geometry
- * More cutting depth compare to conventional holesaws
- * Smooth cutting operation
- * Better rigidity
- * Longer life



BI-METAL HOLE SAW

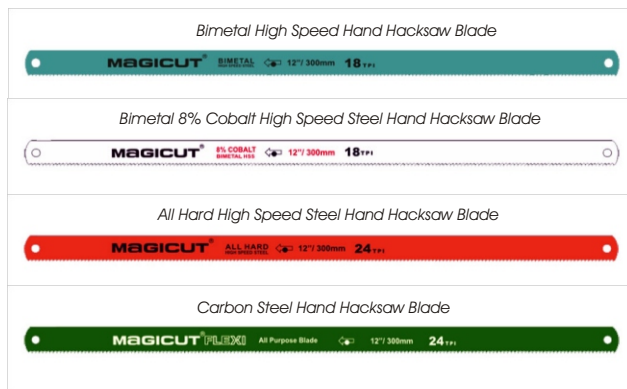


BI-METAL HOLE SAW

Bi-Metal Hole Saws:

Magicut Bimetal Hole Saws are toothed HSS strips electro-beam welded to a tough alloy body and disc. These precision manufactured hole saws that have outstanding strength, resilience and shatter resistance are manufactured in bimetal M3 & 8% cobalt grades. Solid back disc ensures a smooth and precise cut. Variable pitch 4/6 TPI +ve rake teeth reduces cutting vibrations.

Hand Hacksaw Blades & Frames



High Speed Steel Tool Bits & Cut-Off Blades

1. Magicut HSS M-2 Tool Bits

Made from High Speed Steel bearing tungsten-molybdenum grade for use on relatively soft material.

2. Magicut HSS M-35 Tool Bits

Made from High Speed Steel bearing 5% Cobalt. It is an economical grade for general purpose use in workshop and is best suited for applications involving interrupted cuts and roughing operation.

3. Magicut HSS M-42 Tool Bits

Have a high degree of hot hardness and wear-resistance. Made from High Speed Steel bearing 8% Cobalt, these offer top efficiency on difficult-to-machine alloys and high strength steels.

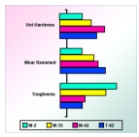
4. Magicut HSS T-42 Tool Bits

5. Relative Properties of Magicut Grades

6. Square & Round Tool Bits



HIGH SPEED STEEL TOOL BITS



PROPERTIES GRADE CHART



SQUARE & ROUND TOOL BITS



Hardcastle Lubricants & Coolants

1. Industrial Lubricants

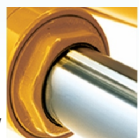
1.1 Hydraulic Oils: Antiwear , HLP type and Super Clean hydraulic oils ranging from VG 32 TO VG 150 grade.

1.2 Gear Oils: High performance Gear oil ranging from 46 to 460 cst

1.3 Spindle Oils: Spindle oils especially suitable in machine tool industry for hydrodynamic spindle bearings in area of grinding spindles on finish grinding machines and on roller bearings in textile machinery.

1.4 Way Lubricants: Slideway Oils designed to provide optimum wear protection under continuous load available in VG46 to VG320 Grade.

1.5 Heat Transfer Oils: Mineral Oil as well as synthetic based Themic Fluids.



2. Die-Casting Lubricants

2.1 Dieface Lubricants: High performance water soluble and solvent based die-casting release agents for aluminium, zinc and magnesium castings.

2.2 Plunger Lubricants: Graphited and non-graphited liquid plunger lubricants for drip feed lubrication, sprayable or swabbing application in die-casting machines.

2.3 Piston Lubricants: Solid piston lubricants with excellent anti wear properties combined with very low consumption.

3. Hot Forging Lubricants

3.1 Water Dilutable Forging Lubricants: Spray Type water dilutable graphite based forging lubricants, for simple and critical forging applications for increased die life.

3.2 Oil Based Forging Lubricants: Oil and graphite based forging lubricants for better die life and more precise forgings with reduced smoke generation.

3.3 Graphite Free Synthetic Lubricant: Oil and graphite free synthetic forging lubricants for relatively simple forgings and warm forging applications.



4. Cutting Coolants

4.1 Neat Cutting Oils: For general machining as well as arduous machining processes such as hobbing, broaching, cold heading, thread rolling, honing, grinding, etc for Ferrous, non-ferrous materials, carbide cutting tools, etc.

4.2 Soluble Cutting Oils: Hardwater stable soluble cutting oils for ferrous and non ferrous machining operations.

4.3 Semi-synthetic Cutting Oils: Semi-synthetic eco friendly and operator friendly cutting oils for long sump life and increased tool life.

4.4 Synthetic Cutting Oils: For grinding and general machining operations, eco friendly and operator friendly. Special grinding fluids for Carbide tips and tools, glass grinding, etc.

4.4 Synthetic Cutting Oils: For grinding and general machining operations, eco friendly and operator friendly. Special grinding fluids for Carbide tips and tools, glass grinding, etc.

4.5 Lapping Compounds: Water washable Lapping compounds with thixotropic properties for lapping of gears, pinions other parts for achieving excellent finish.

5. Rolling & Coating Oils

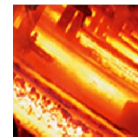
6. Fluid Power Products

7. Heat Treatment Products

8. Drawing Compounds

9. Rust Preventives

10. Cleaners



Other Cutting Tools



ABRASIVE ROLES



SPECIAL PURPOSE PRODUCT



ABRASIVE BELTS



ABRASIVE ROLES

Caltex Hand Tools



CUT OFF WHEEL



GRINDING WHEEL



CUP BRUSH



DIAMOND BLADE



GC WHEEL



HANDSAW HANDLE



FIBER DISC



WOOD CUTTING BLADE



FILE WITH HANDLE



TRI-SQUARE



PLUMBOB



DRILL BIT SET



HINGES BIT



POWER BIT



WOOD FLAT BIT



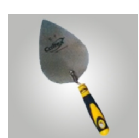
ALLEN KEY SET



SLEDGE HAMMER



COLD CHISEL



KARNI



SPIRIT LEVEL



ELECTRICAL WIRES & CABLES



LED LIGHTS & FITTINGS



SCREWS, NAILS, BOLTS



HACKSAW FRAME



POWER TOOLS



PLIERS



POWER TOOL SPARES



ROUTER BIT SET